

## Overview

The Pason Enhanced Pit Volume Totalizer (ePVT) is a software application that enables drillers to monitor drilling mud volumes during drilling and tripping operations. ePVT uses data collected by Pason sensors to display critical mud system information on a large, graphical, touch screen interface. It also provides audible and visible alarms to notify the rig crew of changes to mud volumes and flows that require attention.

This document provides a graphical overview of the basic ePVT functionality. For more information on using ePVT, see [ePVT User Guide](#) and [Introduction to ePVT Video](#), both on [help.pason.com](http://help.pason.com).

## ePVT Main Interface

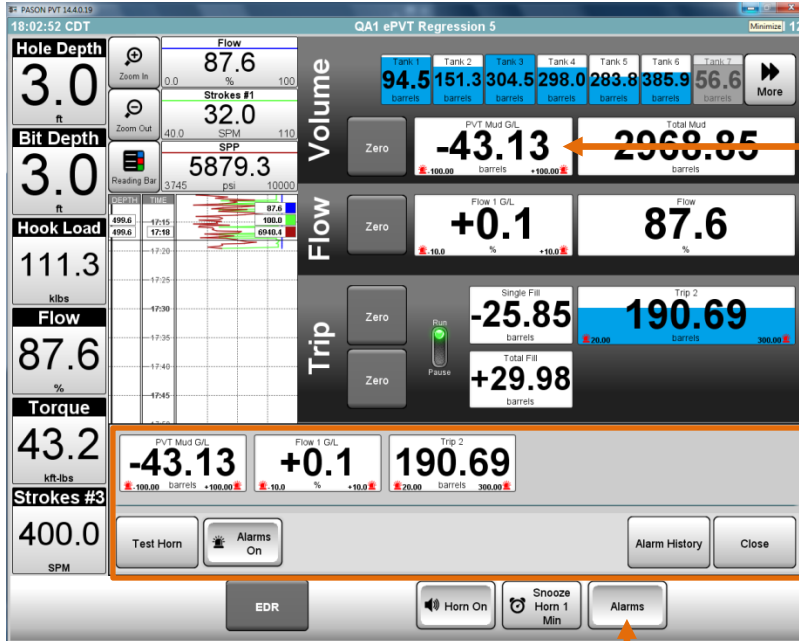
The ePVT main interface displays all of the information for tanks, volume, flow, trip, and pumps on the same screen, alongside drilling and trace data from the EDR.

The screenshot shows the ePVT main interface with the following callouts:

- View configurable drilling data and EDR trace values:** Points to the left-hand column of gauges including Hole Depth (496.8 ft), Bit Depth (496.8 ft), Hook Load (111.3 klbs), Flow (87.6 %), Torque (49.0 kft-lbs), and Strokes #3 (400.0 SPM).
- View a graph of EDR trace data vs time:** Points to the EDR trace graph in the center-left area.
- Switch to the EDR:** Points to the EDR button at the bottom center.
- Zero the mud, flow, trip tanks, or pump strokes:** Points to the 'Zero' buttons for Volume, Flow, Trip, and Pumps.
- Turn off alarm horn:** Points to the 'Horn On' button at the bottom.
- Snooze alarm horn:** Points to the 'Snooze Horn 1 Min' button at the bottom.
- Include or exclude a tank in your total mud volume:** Points to the Tank 1-7 volume gauges at the top right.
- Set alarm thresholds for mud volume gain or loss:** Points to the alarm threshold settings for PVT Mud G/L (+14.23 barrels) and Total Mud (3026.22 barrels).
- Set alarm thresholds for flow gain or loss:** Points to the alarm threshold settings for Flow 1 G/L (+0.0) and Flow (87.6 %).
- Set high and low alarm ranges for the trip tank:** Points to the alarm ranges for Single Fill (-26.00 barrels) and Trip 2 (190.84 barrels).
- When refilling, if you switch to Pause the single fill and total fill won't change:** Points to the Run/Pause toggle for the Trip 2 tank.
- Monitor pump strokes, strokes/min, and volume/min:** Points to the Total P1234 (409234 strokes), Pump Disp. (50340.75 barrels), Pump Rate (5550.5 gal/min), and Pump 1234 (1082 SPM) gauges.
- View additional alarm features on the Alarms panel (see next page):** Points to the Alarms button at the bottom right.

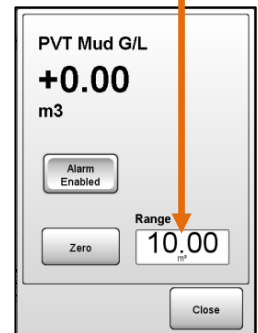
## ePVT Alarm Features

Set alarm thresholds for mud volume, flow, or trip tanks on the main interface. Turn alarms off, test alarms, and view the alarms history from the Alarms panel. Acknowledge alarms on the main interface.

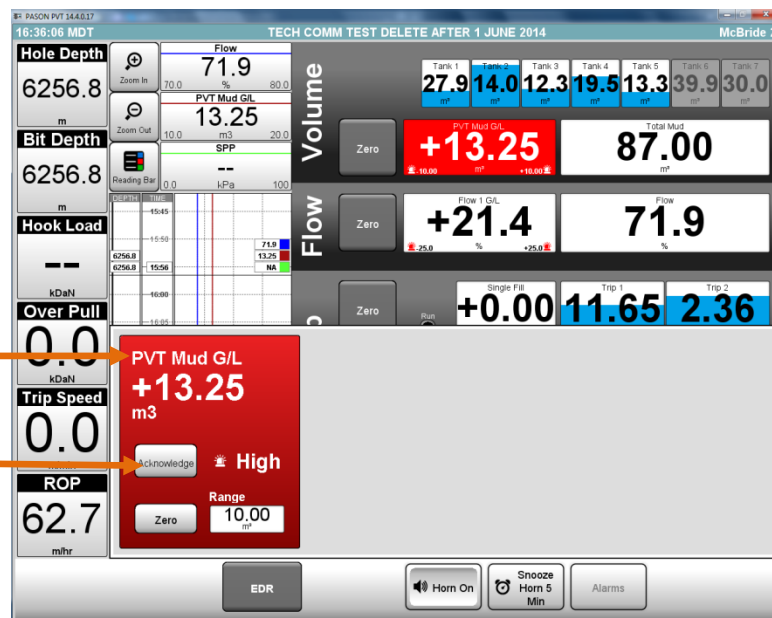


Select to open a screen where you can set alarm thresholds

Enter the alarm threshold in the Range field



Select to open the Alarms panel, where you can set and acknowledge alarms, test the alarm horn, turn all alarms on or off, and view the alarms history



Displays when an alarm is triggered

Select to acknowledge and silence an alarm