

## Overview

Report Datamart is a tool that collects and stores data from your Pason DataHub accounts and lets you retrieve this data in bulk. Once your data is in Report Datamart, you can point business intelligence tools at the data and run analytics, or download your data for storage.

## Getting Report Datamart Access

Before you can access Report Datamart, Pason must enable its use for your contractor/operator group. Next, a DataHub administrator for your group must grant you the necessary permissions. Finally, you must obtain your Datamart credentials.

### Instructions for the DataHub Administrator

As a DataHub administrator, you must grant users the following DataHub privileges for them to be able to use Report Datamart:

- DataHub API access
- Datamart access

In addition to the privileges above, the following DataHub privileges are required to grant individual users access to corresponding data:

- Contractor Morning Report access
- Tour Sheet access
- Payroll access
- SIN/SSN access

To grant these privileges, follow these steps:

1. From your DataHub admin account, select **Settings > Administration > Users**.
2. Select the user you want to grant Report Datamart privileges to.
3. Select the Privileges tab from the control panel on the left.
4. Select the check boxes for Datahub API access and Datamart access. Here, you can also select the other Datamart privileges the user should have access to.



**DataHub**

Home Search Reports Applications Analytics Admin Settings About

**Control Panel**

- General
- Contact
- Privileges**
- Change Log
- Active Sessions
- Login Activity
- Password

**Privileges for User**

Last edited

**LRV Plugin Access**

- ADVANCED\_3D:** LRV Anti-Collision Module
- DISABLE\_3D:** Disable Basic LRV Directional 3D
- Drilling Guidance System:** Enable the DGS Plugin for LRV
- UCT:** User Calculated Traces Plugin

**Beta Feature Access**

- Charge Service:** Enable the Charge Service for select Pason Store users
- Enhanced Time Breakdown Report:** Use the Analytics Data Service as the data source for time code breakdown charts
- Live Rig View:** Enable Live Rig View for select users
- Notifications Beta Feature:** Enable notifications for select users.
- Upload Drill Plan:** Upload a drill plan for the Drilling Guidance System

**DataHub Privileges**

**Privilege Sets**

- DataHub API access:** Enable automated access to the DataHub through the API
- Datamart Access:** Allow access to well information, Contractor Morning Reports, and aggregated tour sheet data from all business units, using a connection such as MySQL ODBC.

Select All Clear All

[Configure Privilege Sets](#)

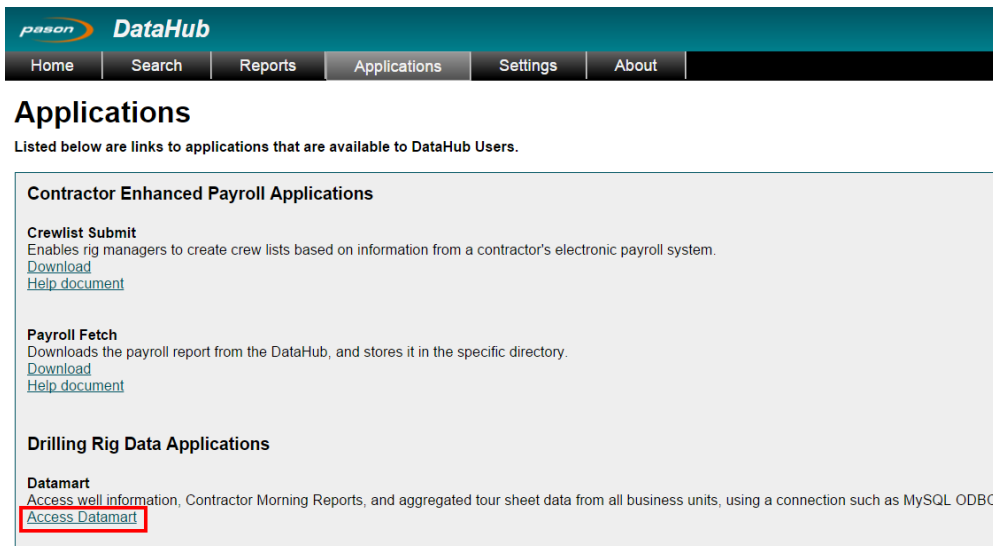
Save

5. Select **Save**.

## Instructions for the Report Datamart User

Once the DataHub administrator for your group has granted you the necessary privileges, you must generate your unique Datamart credentials. Follow these steps from your DataHub account:

1. On the Applications tab, under Datamart, select **Access Datamart**. The Datamart page opens.



**DataHub**

Home Search Reports Applications Settings About

**Applications**

Listed below are links to applications that are available to DataHub Users.

**Contractor Enhanced Payroll Applications**

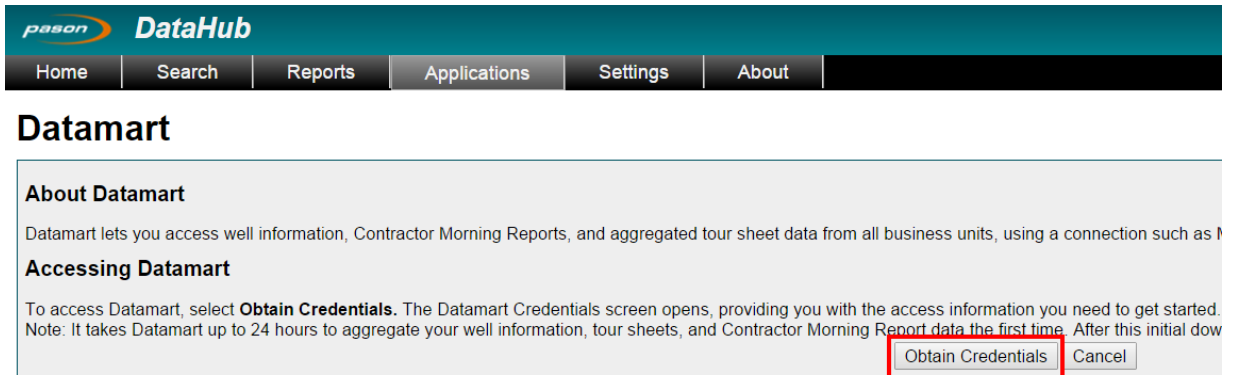
**Crewlist Submit**  
Enables rig managers to create crew lists based on information from a contractor's electronic payroll system.  
[Download](#)  
[Help document](#)

**Payroll Fetch**  
Downloads the payroll report from the DataHub, and stores it in the specific directory.  
[Download](#)  
[Help document](#)

**Drilling Rig Data Applications**

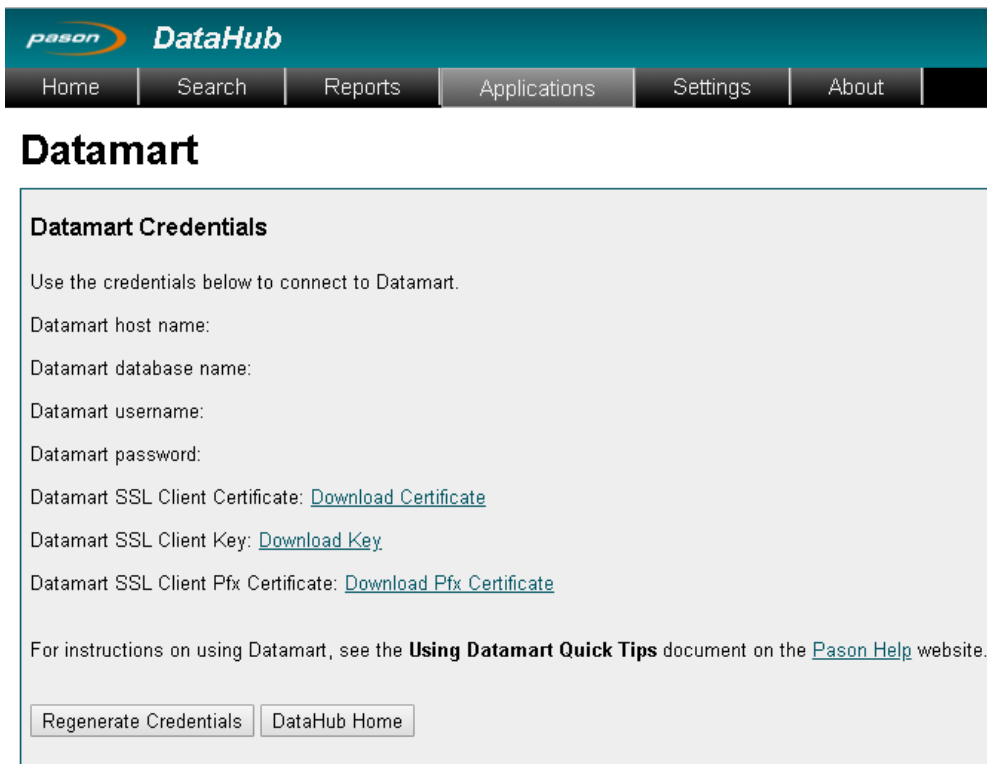
**Datamart**  
Access well information, Contractor Morning Reports, and aggregated tour sheet data from all business units, using a connection such as MySQL ODBC.  
[Access Datamart](#)

## 2. Select Obtain Credentials



The screenshot shows the DataHub interface with a teal header containing the Pason logo and 'DataHub' text. Below the header is a navigation bar with buttons for Home, Search, Reports, Applications, Settings, and About. The main content area is titled 'Datamart' and contains an 'About Datamart' section with introductory text. Below this is an 'Accessing Datamart' section with a note about the 24-hour aggregation process. At the bottom right of the 'Accessing Datamart' section, there are two buttons: 'Obtain Credentials' (highlighted with a red box) and 'Cancel'.

The system generates your credentials and opens the Datamart credentials page.



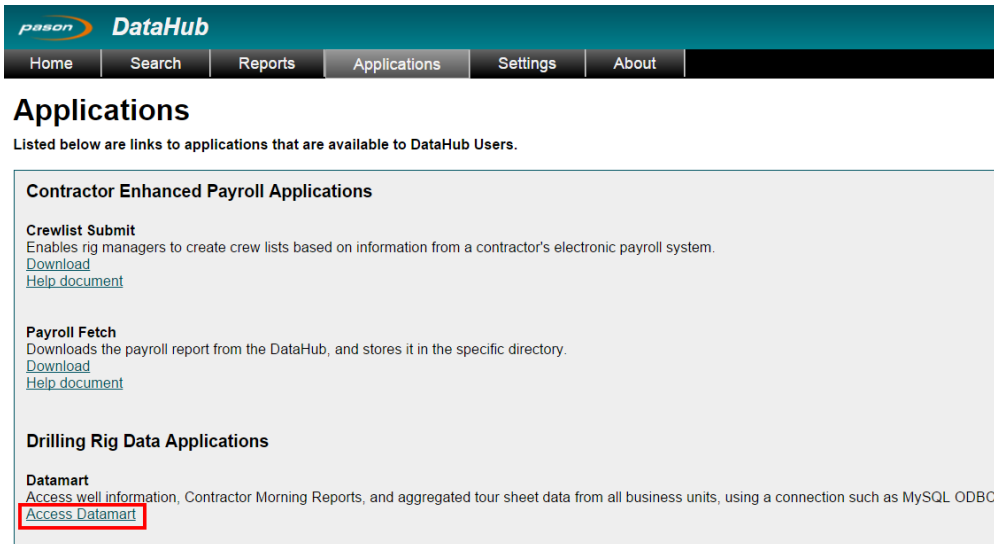
The screenshot shows the DataHub interface with the same teal header and navigation bar. The main content area is titled 'Datamart' and contains a 'Datamart Credentials' section. This section includes instructions to use the credentials below to connect to Datamart, followed by labels for Datamart host name, database name, username, and password. It also provides links to download the SSL Client Certificate, SSL Client Key, and SSL Client Pfx Certificate. At the bottom, there is a note about the 'Using Datamart Quick Tips' document and two buttons: 'Regenerate Credentials' and 'DataHub Home'.

Once you have your Datamart credentials and SSL Certificate-Key pair, you can install the necessary driver, create a data source, and access the Report Datamart. A Pfx Certificate is also provided for applications that use that format instead of the Certificate-Key pair.

## Regenerating Datamart Credentials

Regenerating Datamart credentials is a good way to troubleshoot logon issues. You can regenerate credentials from the Datamart Credentials page. To do so, follow these steps from your DataHub account that has pre-existing Datamart credentials:

1. On the Applications tab, under Datamart, select **Access Datamart**. The Datamart credentials page opens.



**DataHub**

Home Search Reports Applications Settings About

### Applications

Listed below are links to applications that are available to DataHub Users.

**Contractor Enhanced Payroll Applications**

**Crewlist Submit**  
Enables rig managers to create crew lists based on information from a contractor's electronic payroll system.  
[Download](#)  
[Help document](#)

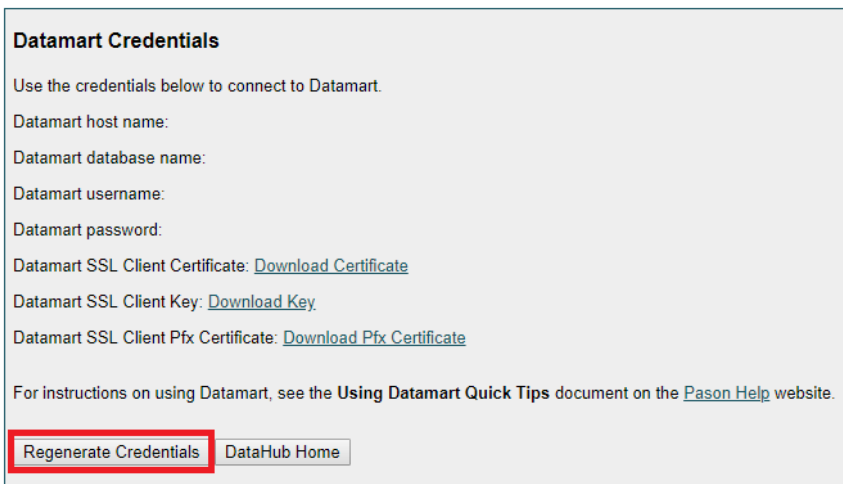
**Payroll Fetch**  
Downloads the payroll report from the DataHub, and stores it in the specific directory.  
[Download](#)  
[Help document](#)

**Drilling Rig Data Applications**

**Datamart**  
Access well information, Contractor Morning Reports, and aggregated tour sheet data from all business units, using a connection such as MySQL ODBC.  
[Access Datamart](#)

2. Select **Regenerate Credentials**. The system regenerates and updates the Datamart credentials page.

## Datamart



**Datamart Credentials**

Use the credentials below to connect to Datamart.

Datamart host name:

Datamart database name:

Datamart username:

Datamart password:

Datamart SSL Client Certificate: [Download Certificate](#)

Datamart SSL Client Key: [Download Key](#)

Datamart SSL Client Pfx Certificate: [Download Pfx Certificate](#)

For instructions on using Datamart, see the [Using Datamart Quick Tips](#) document on the [Pason Help](#) website.

[Regenerate Credentials](#) [DataHub Home](#)

Once you have your updated Datamart credentials, you will need to update your Report Datamart clients to use the new credentials (e.g. ODBC, MySQL client, etc.).

## Installing the MySQL ODBC Driver

### Important:

Before you begin, determine your operating system and the bit version you require. Install the ODBC driver that matches the bit version of the application you want to use the MySQL ODBC connector with. For example, you may be using 64-bit Windows 10, but if you plan on using 32-bit Microsoft Office, the 32-bit ODBC driver is required. Review Microsoft's documentation on how to [find the bit version](#) of Microsoft Office products.

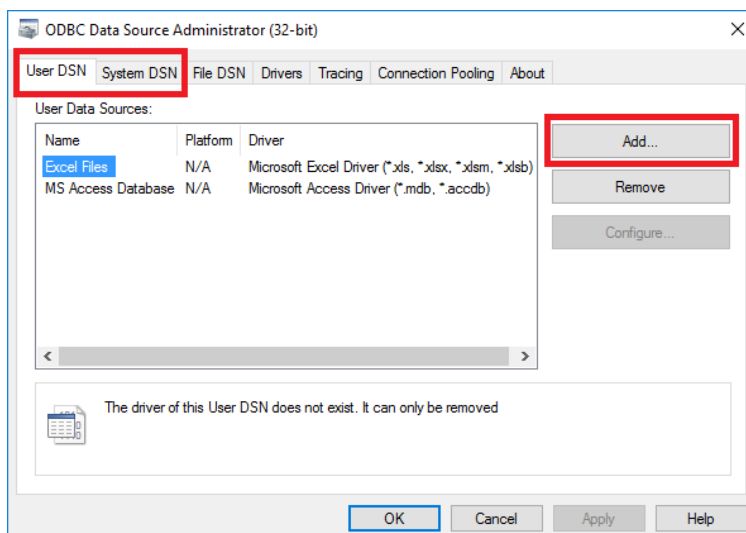
To install the MySQL ODBC driver, perform the following steps:

1. If you're using Windows 10, go to <https://dev.mysql.com/downloads/connector/odbc/>. For earlier versions, go to <http://dev.mysql.com/downloads/connector/odbc/5.1.html>.
2. Download and install the appropriate MSI driver for your platform.

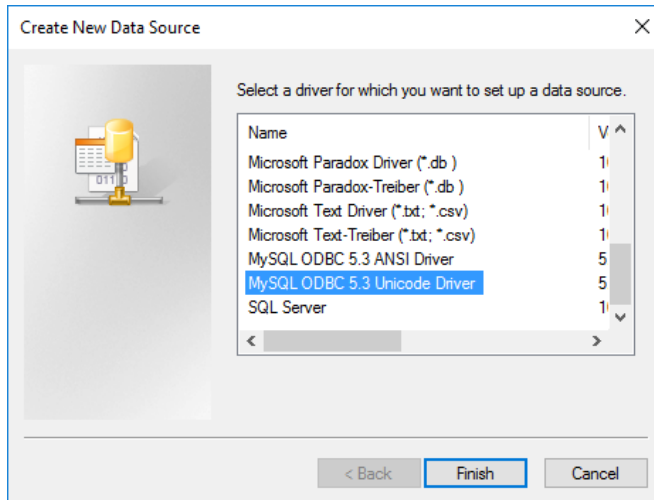
## Creating a Data Source

To create the data source, follow these steps:

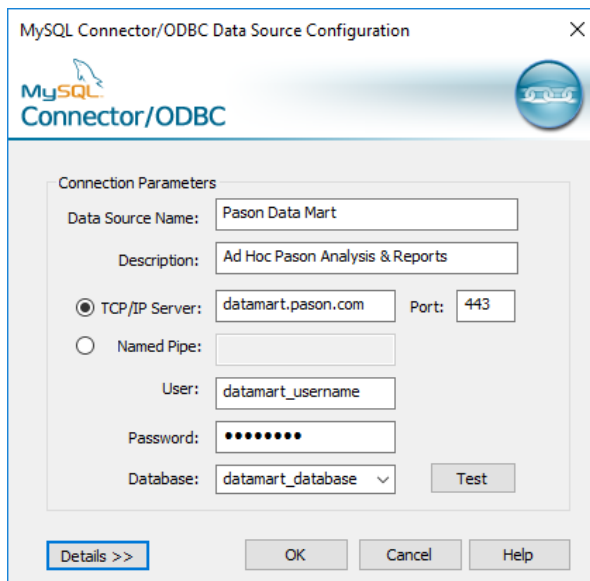
1. Click the Windows **Start** button and open the Control Panel.
2. Click **Administrative Tools**, then double-click **ODBC Data Sources (32-bit or 64-bit)**. Select the bit version matching the MySQL ODBC driver installed. The ODBC Data Source Administrator dialog opens.
3. Select a DSN type tab (**User DSN** or **System DSN**). See <https://support.microsoft.com/en-us/help/966915/user-dsn-vs-system-dsn> for details.
4. Click **Add**.



5. Click **MYSQL ODBC 5.x Unicode Driver**, then click **Finish**.

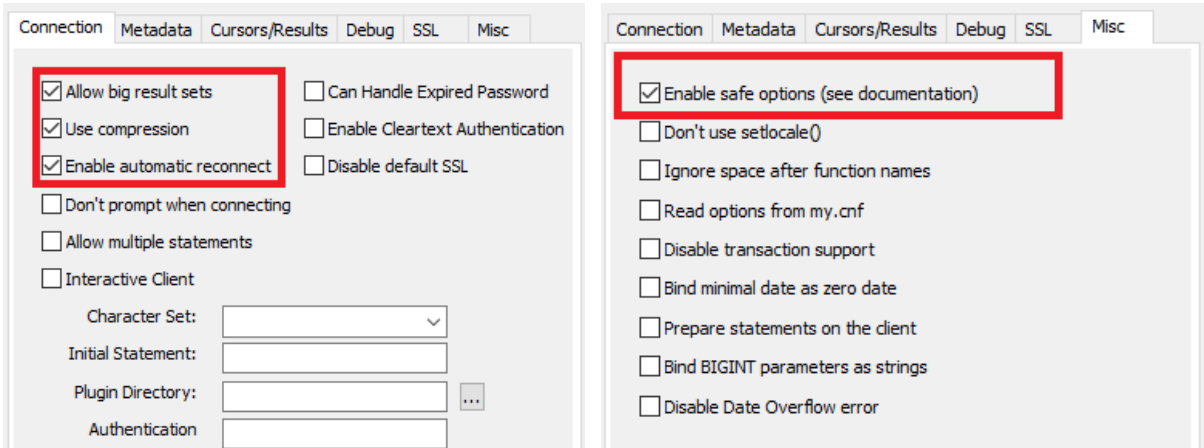



6. Enter the following data source information:
- Data Source Name: **Pason Data Mart**
  - Description: **Ad Hoc Pason Analysis & Reports**
  - TCP/IP Server: **datamart.pason.com**
7. Enter the following Datamart credentials from your DataHub account. (On the Applications tab, select Datamart.)
- User: **Datamart username**
  - Password: **Datamart password**
  - Database: **Datamart database name**

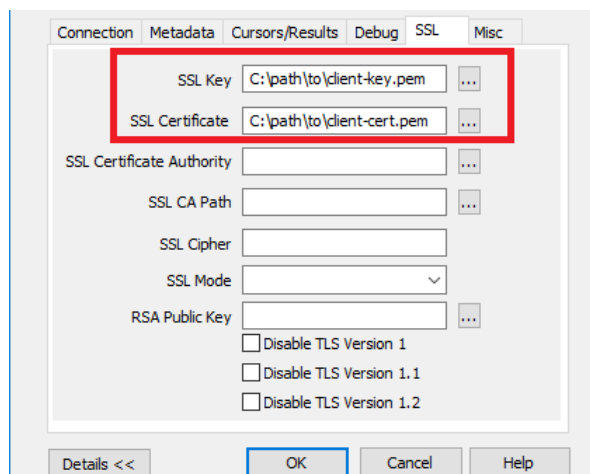


8. Click **Details>>** and check the following boxes:

- Enable Automatic Reconnect
- Use Compression
- Allow Big Result Sets
- Enable Safe Options (on the Misc. tab)



9. Select the SSL tab, pictured below, then  to the right of the SSL Key field and the SSL Certificate field. Navigate to and select each of the .pem files obtained from the Datamart Credentials page.



**Note:**

Do not select Verify SSL Certificate. Pason uses self-signed certificates, so this option will not work.

10. Click **OK**, then **OK** once more. The data source is now configured and can be used by programs that support ODBC data sources. Refer to the documentation provided for your programs to see how ODBC data sources are used.